



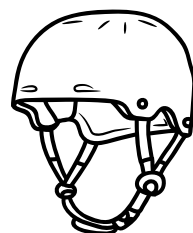
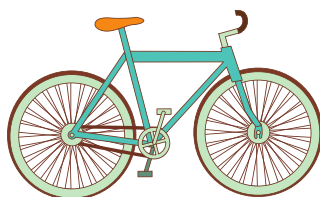
PRINCIPAL MESSAGE



Kia ora e te whanau o te kura o Aorangi,

Well, just like that and term 1 is nearly over. We have one more week left and then I think the ākonga and kaiako all deserve a break.

The holidays is a good time to check in with your tamariki and see what they need to keep warm and safe while at school. We have a number of ākonga who are riding bikes and scooters to school without helmets. If your child is one of these, please make sure they have a helmet. Bikes and scooters will be confiscated if no helmet is worn.



Uniforms!!

It's a good time to get in and order some new uniform for your child/ren. Come in and see Anna about our long sleeved tops for winter.

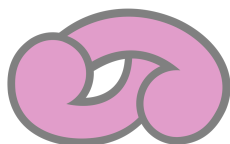


Reminders:

Just a couple of reminders so we are all starting the year on the same page.

- Assembly is on Friday 11th April at 2.20pm. Come along and join in. Certificates will be handed out, and waiata will be sung.
- **TOD 4th April - school will be closed tomorrow!!**

Whaea Billie



Congratulations to our Ice-cream with the Principal winners.



Shiloh (Rm 3), Jovelyn (Rm 5) and Brock (Rm 11)



Thank You

In our last newsletter I put a call out for HELP! with our Milo and Drinking Chocolate. A BIG thank you to Baljeet and Simryn of Crest Cleaning for donating 2 shopping bags of drinking chocolate. These two lovely gentleman clean our kura everyday with a smile.

Thank you also to the whanau who have responded to my call for help and also donated Drinking Chocolate or Milo.

APRIL FOOLS DAY

What a keen bunch of seniors we have. Whaea Tania came up with a plan to play a joke on room 10 & 11 students. The students were told that Matua Tony's lawn mower was broken and we needed some grass to be cut. When asking if the students would be willing to help, all their hands went up. When asked how we could cut the grass "SCISSORS".

So...each student had a pair of scissors and went outside by the bike track to trim the grass back. Not one of them hesitated. You guys rock!!



Classroom News

Creative Play in Rooms 5 & 6

When? Friday Afternoons Duration: 30 – 35 mins Time: 2.00pm – 2.35 pm

Creative play is any activity that allows individuals to use their imagination, curiosity, and creativity to explore and express themselves, with the focus on the process rather than the outcome.

Why is it important?

Creative play emphasises using imagination and expressing oneself freely, whether through art, music, dance, storytelling, or other activities.

Does it help our tamariki? Here are some of the benefits:

Creativity and Innovation: Encourages the development of creative thinking and innovative ideas.

Cognitive Development: Enhances problem-solving, critical thinking, and learning.

Emotional Expression: Provides a safe space for expressing emotions and feelings.

Social Skills: Fosters communication, collaboration, and cooperation.

Self-Expression: Allows individuals to express their unique ideas and perspectives.

Are the teachers involved? Yes, we set up the activities, coach our children and move among them. Often we are invited to performances, such as puppet shows.

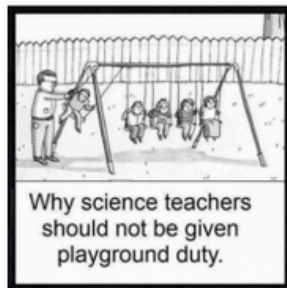


PC4L NEWS

From the PC4L team

Active Supervision - What is this? It is also known as 'duty.' While the children are at play, staff move around the school, monitoring and supporting. We also refer any medical issues to our lovely Mrs Steed, in the office.

There is always a staff member stationed in the junior playground. We wear vests, so children can find us easily. Sometimes, our tamariki try to sort things out by themselves, or ask their siblings or cousins to do so. This isn't the best option, as emotions can run quite high. For that reason, we encourage tamariki to ask the adults to help. Playground issues are recorded into our management system, so we can review and respond accordingly.



IMPORTANT DATES

Keep an eye on our calendar for more events and any date changes.

4th April Teacher Only Day NO SCHOOL

11th April Last Day of Term 1

29th May Teacher Only Day - no school

Assembly is every second week on Friday's at 2.20pm (week 3, 5, 7, 9, 11)

Newsletters are every second (even) week (week 2, 4, 6, 8, 10)



07 347 8448



0272486285



office@aorangi.school.nz